

PRODUCT INFORMATION

MONTANA METALLIC 400ML EFFECT SPRAYS

HIGH-COVERING ABRASION RESISTANT METALLIC EFFECT

ABRASION RESISTANT METALLIC EFFECT - MEDIUM-PRESSURE - PERFECT HANDLING
ACHIEVE GREATER VISUAL DEPTH - SEMI-GLOSS FINISH - INDOOR & OUTDOOR USE
PERFECT FOR ART AS WELL AS DECORATIVE USE - WORKS ON GLASS



PRODUCT INFORMATION

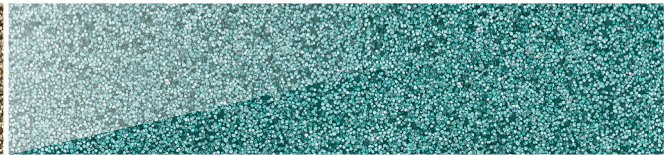
MONTANA METALLIC 400ML EFFECT SPRAYS

HIGH-COVERING ABRASION RESISTANT METALLIC EFFECT

The Montana Metallic Effect Sprays bring state of the art paint technology to traditional metallic effect colors. Loaded with a Montana Standard cap, these cans provide excellent delivery and reliability under medium pressure output. Not only are the Montana Metallic Effect colors ideal for application on functional objects such as bikes and furniture, they can also add a metallic flare to any creative or artistic project on paper, cardboard, primed canvas, wood, glass, metal, ceramics, porcelain, stone, acrylic and other paintable materials. Made from an Acrylic-Nitro Combination base, the paint surface dries to a durable semi-gloss finish which is both hard wearing when cured (24+ hours) as well as flexible. Offering great lightfastness, the Montana Metallic Effect line can also be combined with the Montana GOLD, Montana BLACK and Montana ACRYLIC marker lines.



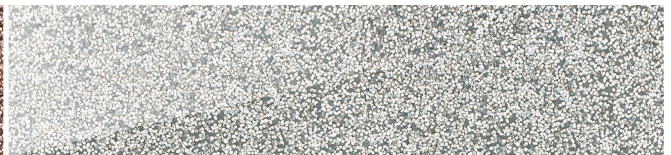
EMC1050 Metallic Gold



EMC6250 Metallic Caribbean



EMC2010 Metallic Champagner



EMC7010 Metallic Silver



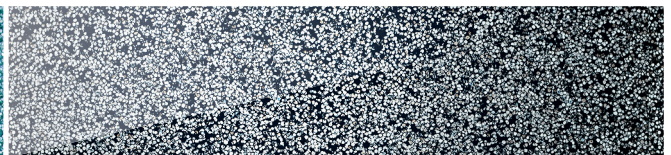
EMC2050 Metallic Copper



EMC7060 Metallic Graphit



EMC5030 Metallic Ice Blue



EMC9000 Metallic Black



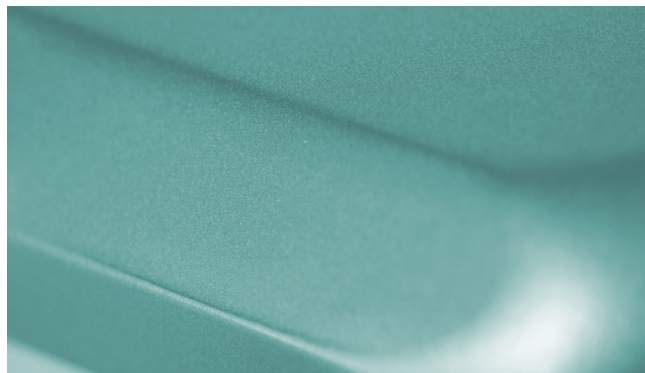
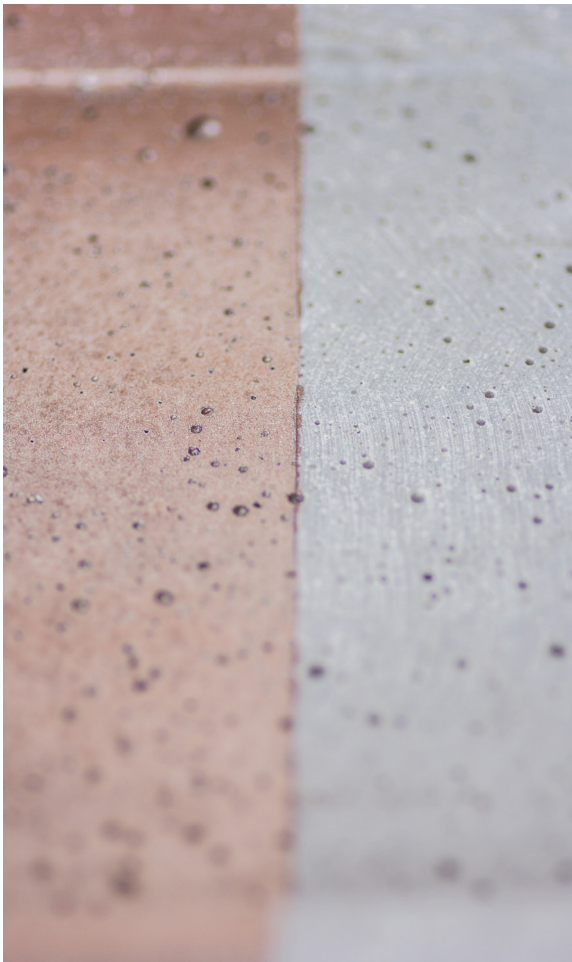
EMC6210 Metallic Tennessee

PRODUCT INFORMATION

MONTANA METALLIC 400ML
EFFECT SPRAYS

HIGH-COVERING ABRASION RESISTANT METALLIC EFFECT

For best results shake can vigorously for approximately 3 minutes before use and apply at a distance of 15cm - 20cm to a pre-primed substrate. Re-shake between intervals to assure settled pigment is re-mixed. To enhance color result even further, pre-prime substrate with a similar Montana GOLD color as base. Apply in thin multiple layers, varying application strokes from vertical to horizontal on each run. Optimum use temperature is between 10 and 15 degrees Celsius. Drying time is normally around 10 mins for dust dry, 20 minutes for touch dry and 24 hours for total curing. Please note drying times vary subject to room temperature and moisture levels. To protect your artwork to its fullest, apply Montana spray Varnish in Gloss, Semi-Gloss or Matt once Metallic Effect colors have dried and cured. We do not recommend objects painted with Metallic Effect colors be exposed to high temperatures over 80 degrees Celsius.



PRODUCT INFORMATION

MONTANA METALLIC EFFECT SPRAYS 400ML

HIGH-COVERING ABRASION RESISTANT METALLIC EFFECT

GENERAL INFORMATION:

product name	Montana METALLIC Effect
color assortment	9 metallic effect (shown by donut ring)
gloss level	gloss and semi-gloss
coverage	opaque
applicable on	canvas, wood, concrete, metall, glass, flexible surfaces
valve system	Medium-pressure
Made in	GERMANY




LACQUER:

lacquer base	NC-Acrylic Based
paint over	When fully dry and cured (after 24h) with Montana GOLD, BLACK or WHITE (Nitro-Combi or Acrylic lacquers). Can also be applied over Montana ACRYLIC paint.
drying time 20°C	Dust dry after approx. 10 min. Touch dry after approx. 20 min. Fully cured after 24h Drying time depends on temperature, humidity and thickness of coating.
temperature-resistant	Heat resistant up to 80°C
processing temperature	Recommended working temperature is between +10°C und +25°C. Humidity max. 50%

SAFETY:

Safety	conforms to ASTM D-4236
Manufacturer's Certificates	ISO 14001:2004, ISO 9001:2008, ISO 14001:2004

PACKAGING/ LABELING:

container dimension	diameter: 65mm / height: 172mm (without cap)
Identification marking	Extremely flammable, harmful   
content/ weight	400ml/ 302g/ NET / 10 OZ.

RECOMMENDED EQUIPMENT:

spray caps	Calligraphy Cap, Flat-Jet Wide and Flat-Jet Medium and Skinny Cap Standard
protection	Montana Nitril and Latex gloves, Nylon gloves, Respirator